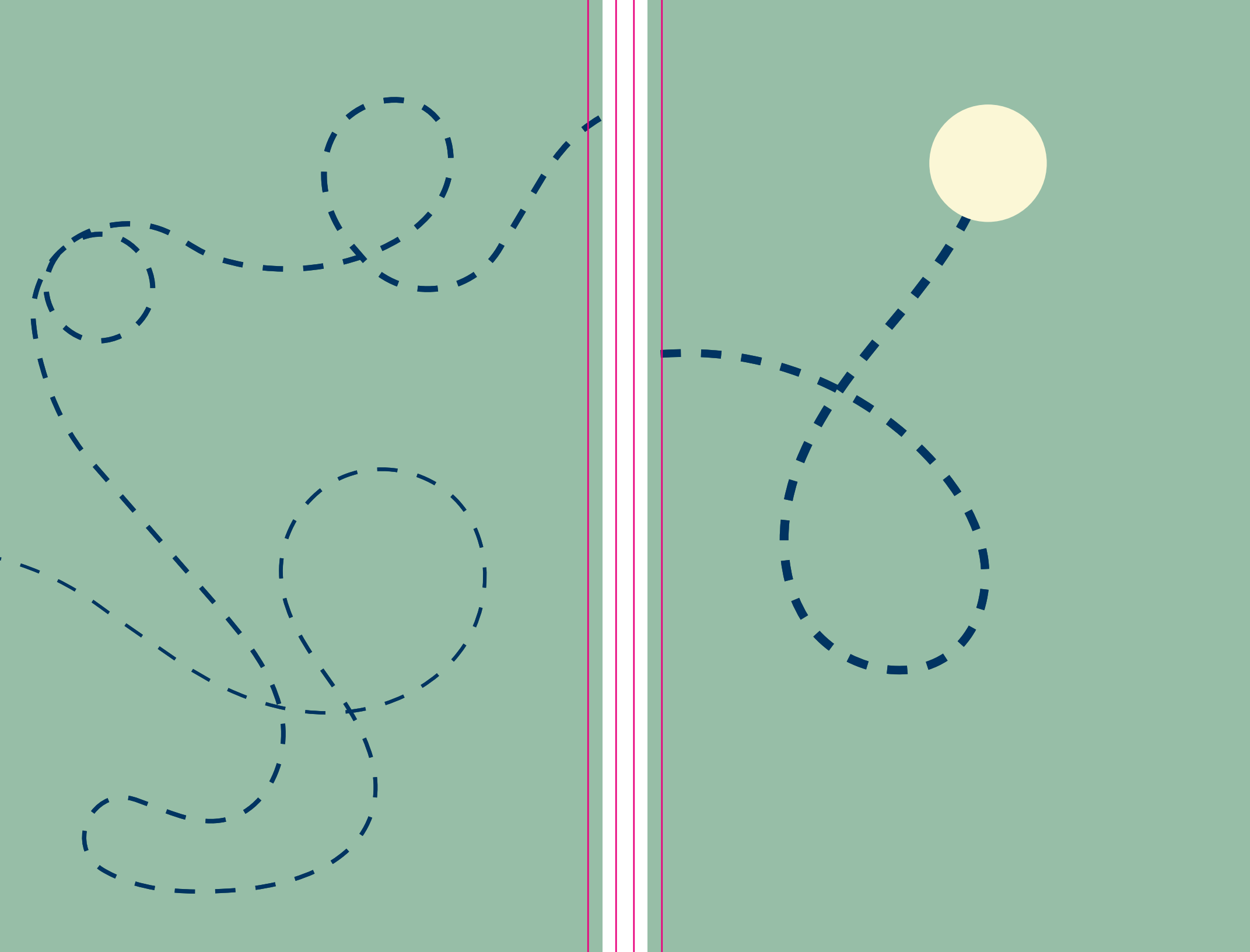
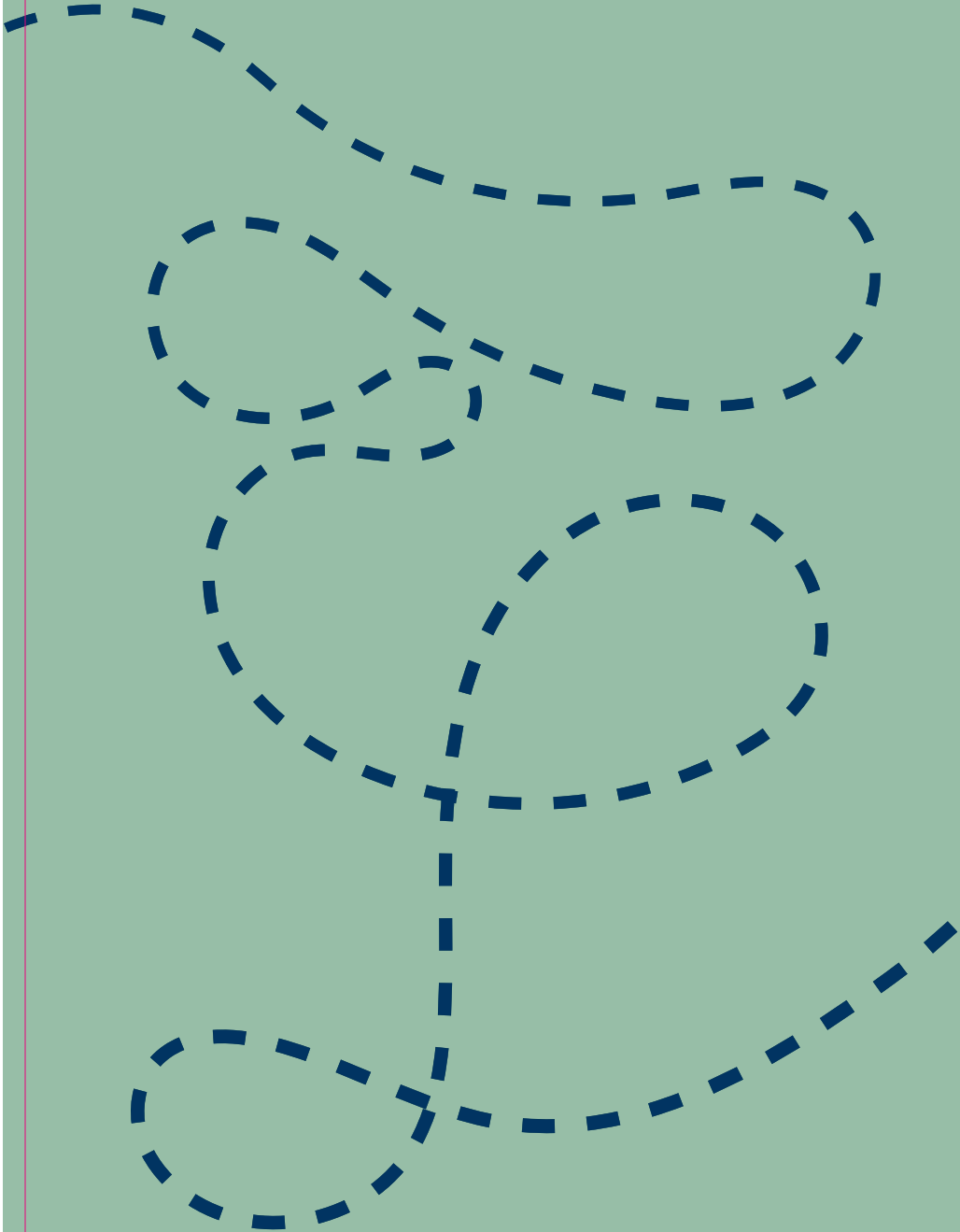


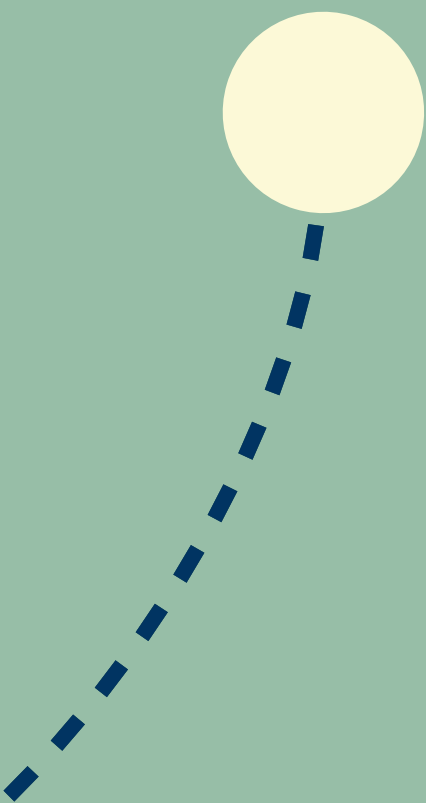
A Field Guide for Graduate Students

A resource guide for new and current graduate students
in the Arts & Humanities at UC Berkeley.

Berkeley
Arts & Humanities







A Field Guide for Graduate Students

View the digital version of this booklet at <https://bit.ly/ahgrads>

About Us

The Division of Arts & Humanities offers 27 graduate degree programs, many ranked the best in the country. Our graduate students have the opportunity to study with more than 250 faculty members who study every dimension of the human experience from the ancient past to the anticipated future. They employ a range of critical, theoretical, and rhetorical frameworks and work in more than 60 different languages. Our designated emphasis programs, research centers, and robust working groups offer interdisciplinarity, opportunities to collaborate, and a community of intellectual inquiry and practice.

A&H By the Numbers

250+

Faculty

570

Graduate Students (AY 22-23)

23

Ph.D. Programs

3

M.A. Programs

1

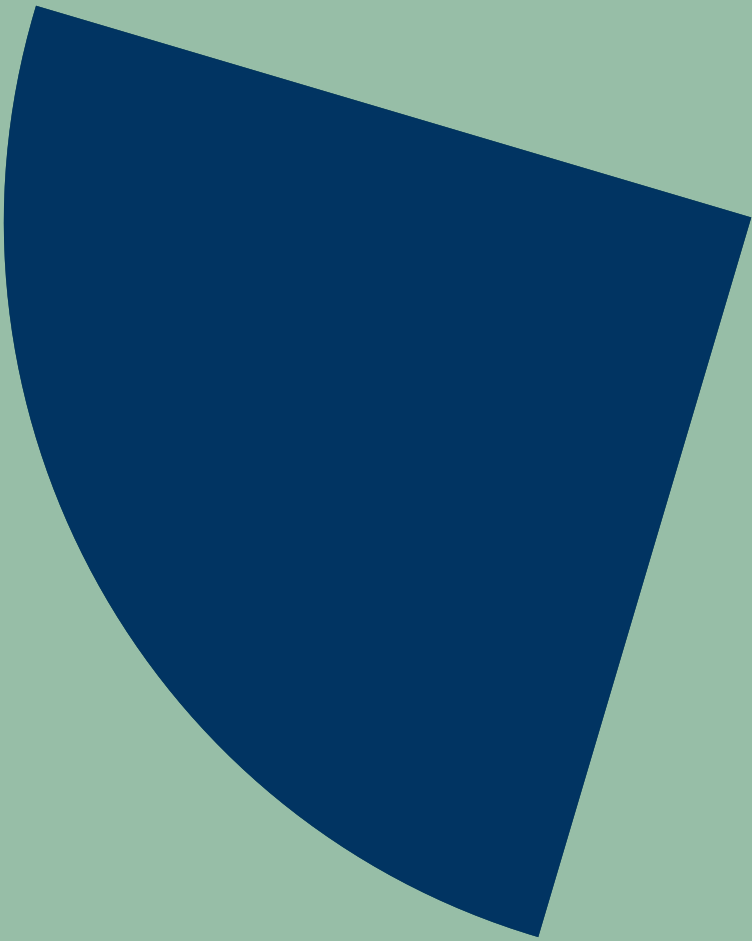
M.F.A. Program

6

Designated Emphasis (DE) Programs

8

Research Centers



Degrees

Ancient Greek & Roman Studies Classics, Ph.D. and Classical Archaeology, Ph.D.

Contact: Kristen Brooks, kristenbrooks@berkeley.edu
<https://dagsr.berkeley.edu/>

Ancient History & Mediterranean Archaeology, Ph.D.

Contact: Grant Tompkins, grant.tompkins@berkeley.edu
<https://ahma.berkeley.edu/>

Art Practice, M.F.A.

Contact: Professor Asma Kazmi, akazmi@berkeley.edu
and Professor Anne Walsh, agwalsh@berkeley.edu
<https://art.berkeley.edu/>

Asian Studies, M.A.

Contact: Grant Tompkins, grant.tompkins@berkeley.edu
<https://asianstudies.berkeley.edu/>

Buddhist Studies, Ph.D.

Contact: Grant Tompkins, grant.tompkins@berkeley.edu
<https://buddhiststudies.berkeley.edu/>

Comparative Literature, Ph.D.

Contact: Rita Lindahl-Lynch, complitga@berkeley.edu
<https://complit.berkeley.edu/>

East Asian Languages and Cultures, Ph.D.

Contact: Grant Tompkins, grant.tompkins@berkeley.edu
<https://ealc.berkeley.edu/>

English, Ph.D.

Contact: April Sanders, gradadvisor_english@berkeley.edu
<https://english.berkeley.edu/>

Film and Media, Ph.D.

Contact: Kathleen Pera, rfahgradadvising@berkeley.edu
<https://filmmedia.berkeley.edu/>

French, Ph.D.

Contact: Pichaya Kositsawat, frenchga@berkeley.edu
<https://french.berkeley.edu/>

German, Ph.D.

Contact: Andrea Rapport, germanga@berkeley.edu
<https://german.berkeley.edu/>

Hispanic Languages and Literatures, Ph.D.

Contact: Sebastião Edson Macedo, spanga@berkeley.edu
<https://spanish-portuguese.berkeley.edu/>

History of Art, Ph.D.

Contact: Clay Hall, clayh@berkeley.edu
<https://arthistory.berkeley.edu/>

Italian Studies, Ph.D.

Contact: Seth Arnopole, issag@berkeley.edu
<https://italian.berkeley.edu/>

Medieval Studies, Ph.D.

Concurrent degree program
Contact: April Sanders, gradadvisor_english@berkeley.edu
<https://medieval.berkeley.edu/>

Middle Eastern Languages & Cultures, Ph.D.

Contact: Deanna Kiser-Go, dkisergo@berkeley.edu
<https://melc.berkeley.edu/>

Music, Ph.D.

Contact: Jeremy Hunt, musicgradadvisor@berkeley.edu
<https://music.berkeley.edu/graduate-studies/>

Rhetoric, Ph.D.

Contact: Kathleen Pera, rfahgradadvising@berkeley.edu
<https://rhetoric.berkeley.edu/>

Performance Studies, Ph.D.

Contact: Avy Valladares, performancestudies@berkeley.edu
<https://tdps.berkeley.edu/>

Philosophy, Ph.D.

Contact: Bill Dellinger, gradphil-advisor@berkeley.edu
<https://philosophy.berkeley.edu/>

Romance Languages & Literatures, Ph.D.

Contact: Pichaya Kositsawat, frenchga@berkeley.edu
<https://romancelangs.berkeley.edu/>

Scandinavian Languages and Literatures, Ph.D.

Contact: Seth Arnopole, issag@berkeley.edu
<https://scandinavian.berkeley.edu/>

Slavic Languages and Literatures, Ph.D.

Contact: Seth Arnopole, issag@berkeley.edu
<https://slavic.berkeley.edu/>

South and Southeast Asian Studies, M.A., Ph.D.

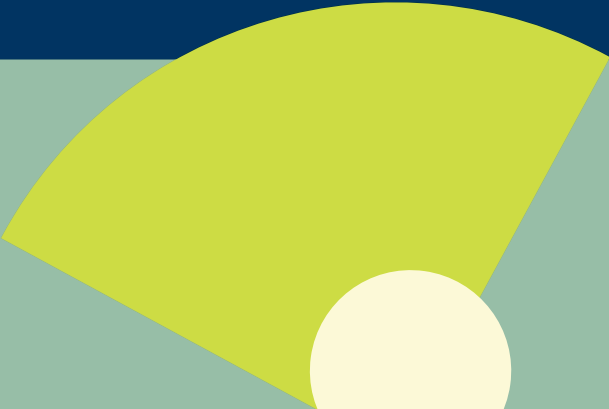
Contact: Kristen Brooks, Kristenbrooks@berkeley.edu
<https://sseas.berkeley.edu/>

“Students often come to my classes with a hunger for ‘big ideas’ – they want to tackle the major philosophical and ethical questions that confront us and yet, they also want to know how to change the world. For many, no single field of study – whether in the humanities or social sciences – seems adequate to the task. This is where Critical Theory comes in and is often revolutionary for their thinking. Because it is fundamentally interdisciplinary and is invested in the question of how what we do in a university produces, and therefore can change, the conditions of life in society.”

Poulomi Saha, Associate Professor of English and Co-Director for the Program in Critical Theory

Read about Professor Saha and the Critical Theory program by scanning the QR code.





Designated Emphasis Programs

Below are Designated Emphasis (DE) programs offered by the Division of Arts & Humanities as well as affiliated programs of interest from the Division of Social Sciences.

Critical Theory, DE

Contact: critical_theory@berkeley.edu
<https://criticaltheory.berkeley.edu/>

A program that consists of faculty from over 34 departments across the Arts & Humanities and Social Sciences divisions and the schools of Law and Education, Critical Theory is at the forefront of interdisciplinary scholarship researching the unprecedented complexities and challenges of economics, politics, culture and the arts—and, indeed, of everyday life.

Dutch Studies, DE

Contact: Jeroen DeWulf, jdewulf@berkeley.edu
<https://dutch.berkeley.edu/>

Designed to bring together faculty and students from different departments, the DE is administered by the Graduate Group in Dutch Studies and provides a unique context for rigorous cross-disciplinary research. Sponsoring departments include German, History, History of Art, Southeast Asian Studies, African American Studies, Comparative Literature, French, and Sociology.

European Studies, DE

Contact: Akasemi Newsome, akasemi@berkeley.edu
<https://ies.berkeley.edu/>

The European Studies DE provides curricular and research resources for graduate students who want to concentrate on European Studies within their respective disciplines and have their work formally recognized in their degree designation.

Film and Media, DE

Contact: Kathleen Pera, rfahgradadvising@berkeley.edu
<https://filmmedia.berkeley.edu/>

The DE in Film & Media Studies provides curricular and research resources for students who want to concentrate on Film & Media within their respective disciplines and have their work formally recognized in their degree designation.

Folklore, DE

Contact: Tabea Mastel, tmastel@berkeley.edu
<https://folklore.berkeley.edu/>

The study of folklore, folkloristics, enables interrogations of the complex relationships between "traditionality" and "modernity", the historical emergence of informal cultural expressive forms, the dynamics of their circulation(s) on and across social networks, and the importance of folklore and related concepts such as "tradition" and "heritage" in shaping political and social projects.

Global Metropolitan Studies, DE

Contact: Eva Soto, evaseto@berkeley.edu
<https://metrostudies.berkeley.edu/>

Global Metropolitan Studies addresses major transformations in cities around the world, and seeks to change how we study cities. Urbanization brings a range of new political configurations and challenges — ecological crises, processes of democratization and de-democratization, urban marginality, and emergent strategies of recognition and resistance.

Indigenous Language Revitalization, DE

Contact: Johnny Morales Arellano, ling-gsao@berkeley.edu
<https://lx.berkeley.edu/academics/>

An interdisciplinary course of study that draws together an intellectual cohort of faculty and students from various departments with knowledge of the methods, histories, and goals of Indigenous language revitalization and reclamation.

Jewish Studies, DE

Contact: Etta Heber, eheber@berkeley.edu
<https://jewishstudies.berkeley.edu/>

The DE in Jewish Studies provides curricular and research resources for students who want to concentrate on Jewish Studies within their respective disciplines and have their work formally recognized in their degree designation.

New Media, DE

Contact: Alex Saum-Pascual, saum-pascual@berkeley.edu
<https://bcnm.berkeley.edu/>

The Berkeley Center for New Media is a cross-disciplinary research and teaching program that offers its own graduate courses, recommends related courses, and encourages research collaborations to enhance the intellectual community of UC Berkeley scholars interested in new media.

Renaissance and Early Modern Studies, DE

Contact: Kristin Primus, kprimus@berkeley.edu
<https://rems.berkeley.edu/>

The DE in Renaissance and Early Modern Studies offers students comprehensive training in a wide range of disciplines, fosters cutting-edge research, and provides opportunities for close collaboration with faculty across the Arts, Humanities, and Social Sciences.

Study of Religion, DE

Contact: info.bcrs@berkeley.edu
<https://bcsr.berkeley.edu/>

The DE in the Study of Religion (DESR) supports graduate training in Religious Studies and in the Theory of the Study of Religion, promotes graduate research on topics related to religion, and brings together a cross-disciplinary faculty Group in the Study of Religion.

Women, Gender, and Sexuality, DE

Contact: Sandy Richmond, sandybr@berkeley.edu
<https://gws.berkeley.edu/>

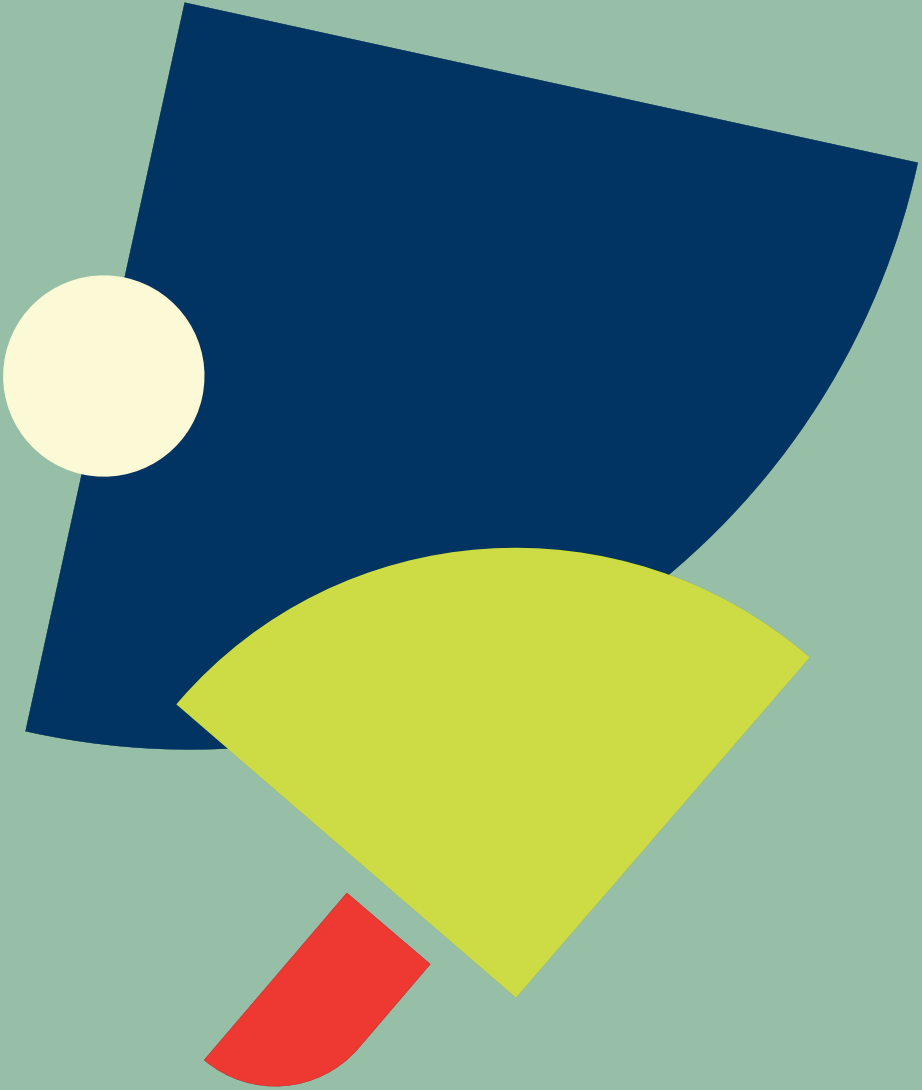
The DE program was developed to accommodate some of the many students who conduct graduate-level research in gender and/or sexuality-related topics on the Berkeley campus. Administered by the Department of Gender & Women's Studies and its affiliated faculty, the DEWGS provides its students with certification as well as with a context for the interdisciplinary exchange of ideas and development of research.

“Berkeley has long been the mecca of Asian American excellence—a pantheon of scholars, writers, artists, and activists have attended or taught at Berkeley such as Theresa Cha, Maxine Hong Kingston, and Jeff Chang, to name just a few. It’s where “Asian America” was first coined after all—as a call-to-arms —rather than an identity marker– to stand for solidarity and anti-imperialism.”

Cathy Park Hong, Professor and Class of 1936 First Chair in the College of Letters and Science, Department of English

Read an interview with Professor Park Hong about recent publications, teaching, and thoughts on the future of AI and literature by scanning the QR code.





A&H Core Research Centers

Arts Research Center (ARC)

The Arts Research Center is a think tank for the arts. It acts as a hub and a meeting place, a space for reflection where artists, scholars, curators, and civic arts leaders from a variety of disciplines can gather and learn from one another. ARC has a fellows program that connects faculty and graduate students for creative academic discussion and practice.

Berkeley Center for the Study of Religion (BCSR)

The Berkeley Center for the Study of Religion advances creative and critical scholarship on religion. BCSR's public programming, faculty research, and graduate training drives new approaches to the study of religion and its intellectual and material contexts. Through our media platforms and engagement with local and global audiences, BCSR fosters critical reflection and public discussion.

Berkeley Language Center (BLC)

The Berkeley Language Center's mission is to support the learning and teaching of heritage and foreign languages on the Berkeley campus and, where appropriate, in the University of California system. Graduate students can find meaningful partnerships, award and project opportunities, and academic topics ranging from language preservation to AI and language.

Center for Jewish Studies (CJS)

The mission of the Center is to gather faculty, students, and visiting academics for research and debate across the wide scholarly landscape of Jewish Studies. The Center for Jewish Studies is committed to educating students and the larger community about the richness, depth, and diversity of Jewish history and culture.

Center for New Music and Audio Technologies (CNMAT)

CNMAT is dedicated to multidisciplinary research and the creative use of sound, linking the concert hall to the laboratory. CNMAT supports a dynamic group of educational, performance and research programs focused on the creative interaction between new music and emerging technologies.

Center for Interdisciplinary Critical Inquiry (CICI)

The Center for Interdisciplinary Critical Inquiry (CICI) supports and develops interdisciplinary research and programming on the Berkeley campus and beyond and is home to the program in Critical Theory and The Berkeley Center for the Study of Religion, among other programs and grant-funded initiatives. CICI produces research and academic activities across disciplinary and departmental lines, leveraging opportunities for exchange, programming, and dissemination within campus and to a global audience through events, programs, working groups, research opportunities and more.

The Magnes Collection of Jewish Art and Life

In 2010 the Judah L. Magnes Museum became The Magnes Collection of Jewish Art and Life at the University of California, Berkeley. As one of the preeminent Jewish collections in the world, it provides accessible resources to scholars, students, and visitors. Its remarkably diverse archive, library, and museum holdings include art, objects, texts, music, and historical documents about Jews in the global diaspora including the American West.

Townsend Center for the Humanities

Since its establishment in 1987, the Doreen B. Townsend Center for the Humanities has encouraged an interdisciplinary approach to scholarship, fostered innovative research, and promoted intellectual conversation across academic fields. The Townsend Center is committed to enriching the existing wealth of intellectual resources at Berkeley through an array of fellowship and grant programs designed to support research and scholarship at all levels of the university community. The Townsend Center has more than 60 graduate student and faculty working groups, offers full fellowship opportunities to graduate students and faculty, and presents a robust series of research and academic programming and events annually.

Centers with Affiliated Faculty

Canadian Studies Program

canada.berkeley.edu

Center for African Studies

africa.berkeley.edu

Center for Latin American Studies

clas.berkeley.edu

Center for Middle Eastern Studies

cmes.berkeley.edu

Center for Race and Gender

crg.berkeley.edu

Center for Science, Technology, Medicine and Society

cstms.berkeley.edu

Center for the Science of Psychedelics

psychedelics.berkeley.edu

Center for the Study of Law and Society

csls.berkeley.edu

Center for the Study of Sexual Culture

<https://cssc.berkeley.edu/>

Center for the Tebtunis Papyri

tebtunis.berkeley.edu

Institute for Gender and Sexuality Research

gws.berkeley.edu/

Institute for South Asia Studies

southasia.berkeley.edu

Institute of East Asian Studies

ieas.berkeley.edu/

Institute of European Studies

ies.berkeley.edu

Institute of Slavic, East European, and Eurasian Studies

isees.berkeley.edu

Numata Center for Buddhist Studies

buddhiststudies.berkeley.edu



Funding Resources

Arts & Humanities Departmental Grants, Fellowships, and Awards

This list is curated by the Dean's office to include numerous grants, fellowships, and awards relevant to graduate students in the arts and humanities. We are always adding to it, but it is not comprehensive. We recommend students check regularly with their departments about opportunities and to sign up for departmental newsletters and listservs.

<https://artshumanities.berkeley.edu/%5Cgsfr>

Fellowships Coordinated by the Graduate Division

This list of fellowships offered and coordinated by the Graduate Division is open to any and all graduate students at UC Berkeley. Browse the awards, descriptions, and deadlines to learn more about possible funding opportunities.

<https://grad.berkeley.edu/financial/options-for-financial-support/fellowships/>

"We live in a moment where the arts can be a vehicle to discuss complex issues in ways that other forms of expression can't. Art practice often involves deep explorations into research and can have important political motivations and impacts. It's a discipline that is really reflective of individual truths and I think one thing that's very beautiful about being an artist is that you can tell those truths in a way that allows others to see them."

Ronald Rael, Chair, Department of Art Practice, Professor of Architecture

Read a story about MFA student Brandon Sánchez Mejía, the department of Art Practice's 100th anniversary, and the pursuit of practice at UC Berkeley by scanning the QR code.





Campus Resources

The American Indian Graduate Program (AIGP)

The AIGP provides graduate students, faculty, and administrative staff access to a series of Native American career leadership seminars and programming that promote professional mentorship with faculty, fellow graduate students, and Native American professionals engaged in tribally inclined/ Indigenous- centered professional careers at UC Berkeley.

Counseling and Psychological Services

The UHS Counseling and Psychological Services (CAPS) supports the emotional, psychological, educational, social and cultural development of all UC Berkeley students through a wide range of multiculturally based counseling, psychiatric, career, and educational services.

Disabled Students' Program

The Disabled Students' Program (DSP) supports students with disabilities in achieving academic success at the world's top-ranked public higher education institution. Our staff includes disability specialists, service providers, and accessibility experts who serve our students with disabilities throughout their educational career.

Gender Equity Resource Center

The Gender Equity Resource Center (GenEq), is a campus community center serving students, faculty, staff, and alumni. It connects people to resources, services, education and leadership programs related to gender and sexuality.

Graduate Assembly

The Graduate Assembly is the official representative body of graduate and professional students at the University of California, Berkeley. The GA advocates for graduate student rights, funds student groups on campus, and directly manages projects and initiatives which support graduate student communities. Current GA projects include the Graduate Minority Student Project, Graduate Social Club, Graduate Student Parent Advocacy Project, Graduate Student Wellness Project, Graduate Womxn's Project, Sexual Orientation and Gender Advocacy, the Womxn of Color Initiative, and the International and Undocumented Students Project.

Graduate Wellness Center

Located at 444 Eshleman Hall, the Graduate Wellness Center is a satellite office for Counseling and Psychological Services and the Disabled Students Program. The Wellness Center provides graduate-focused wellness and mental health services in a location where graduate students do not have to worry about running into faculty or students they teach.

The LEAD Center

There are over 150 registered graduate student organizations (RGSOs) across 15 unique interest areas, including academics, cultural identity groups, professional organizations, and many more. The LEAD Center offers administrative and advising support to all RGSOs to assist with basic operations, leadership development, and strategic planning. Visit the CalLink Organization Directory for a list of Student Organizations.

Ombuds Office for Students and Postdoctoral Appointees

The mission of the Ombuds Office for Students and Postdoctoral Appointees is to provide an informal dispute resolution process while advocating fairness and reasonable solutions to student and postdoctoral issues and concerns.

PATH to Care Center

The PATH to Care Center leads the effort to transform the campus into a community that is free of sexual violence, harassment, intimate partner violence, and stalking through prevention, advocacy, training, and healing.

Public Service Center

The Public Service Center (PSC) brings together students, faculty, and communities in support of social justice, civic engagement, and transformative social change. The PSC offers programming, paid positions, and training for graduate students. The PSC connects graduate students to colleagues in the fields of engaged scholarship, service-learning, civic engagement, and community-based participatory research and supports those who are developing community-based courses and research. The PSC offers programs for graduate students to mentor undergraduate public service leaders and convenes graduate learning communities and workshops on engaged scholarship.

recalibrate.berkeley.edu

Wellness is personal and multi-dimensional, and our needs frequently change. This website was developed with unique communities in mind and offers tools that will help you identify your own system of wellness on campus.

Restorative Justice Center

The Restorative Justice Center of UC Berkeley offers community building circles in response to harm to students and staff on campus. Trauma-informed restorative justice practitioners can work with communities to develop a process that meets their needs.

University Health Services, Tang Center

Students can use the medical services at the Tang Center just as they would their regular doctor's office and urgent care center. Our facility is fully accredited, staffed by licensed and/or board-certified physicians, nurse practitioners, physician assistants, a nutritionist, and nurses.

Undocumented Graduate Student Resources

The Office for Graduate Diversity (OGD) is honored to serve the needs of Undocumented Graduate Students at UC Berkeley. See our list of resources or contact us at: undocugrad@berkeley.edu

“If you look at the landscape of Asian Studies or East Asian studies across the U.S. and in Europe, it's not a field with a great deal of diversity of representation of non-Asian or non-white people. I want Berkeley to become a flagship for serving those populations as well as welcoming more people from California State Universities and different levels of the tertiary educational system here in California.”

Andrew Jones, Louis B. Agassiz Chair in Chinese, East Asian Languages and Cultures.

Read a story about Professor Jones's research, teaching and advising by scanning the QR code.





Student Parent resources

The **Student Parent Center** is committed to the holistic support and success of undergraduate and graduate students who are engaged scholars and devoted parents at UC Berkeley. The center is a centralized multi-purpose campus resource, where students can seek informed advice, develop leadership skills, engage in informal study groups, nurse babies, change diapers, celebrate achievements, recover from setbacks, and form lasting friendships. For more information, visit the Student Parent Center website.

Berkeley Parents Network

Created by UC Berkeley graduate students in 1993, this independent, free, volunteer-run online community offers parent-to-parent advice and local referrals on childcare, pediatricians, schools, and much more.

Graduate Student Parent Advocacy Project (GSPA)

The Graduate Student Parent Advocacy Project is a project within the Graduate Assembly that advocates for student parents and develops programs to support their academic and personal success. Contact the Project Director: gspa-ga@berkeley.edu.

“I got into Berkeley and accepted the offer, a decision I continue to feel positively about. The English department here is unique in that you are expected to have a very rigorous training in the discipline itself – to be able to understand how one closely reads, how one thinks about literary criticism and literary history, etc. – but at the same time, there is a lot of freedom to think about interdisciplinarity, and to bring various concepts and theories and methods together.”

Noor Asif, Graduate Student, Department of English

Read an interview with Noor about being being a student in the Department of English by scanning the QR code.





Campus Housing

Find on and off campus resources for housing at <https://housing.berkeley.edu/>

Living in UC Berkeley housing offers a number of benefits: convenient locations, helpful amenities (most units are furnished), and the opportunity to live alongside other Berkeley graduate students. Graduate student applications are accepted via the Housing web portal on an ongoing basis; the earliest applicants receive priority.

Website: <https://housing.berkeley.edu/explore-housing-options/housing-by-user-type/graduate-students/>

Ida Louise Jackson Graduate House

Located one block from the campus on tree-lined College Avenue.

- The complex offers two-, three-, four-, five-, and six-bedroom shared furnished apartments.
- Utilities are included. A twelve-month lease is required.
- Students with specific fellowships receive priority.

Manville Apartments

is a secured complex of studio apartments reserved for law and graduate students.

- Located three blocks from the southwestern corner of campus.
- Walking distance to downtown Berkeley and near shops, banks, movie theaters, restaurants, and public transportation.

Albany Village Graduate Student Apartments

Are expected to open Fall 2024.

- Located 3.5 miles west of campus, adjacent to the University Village Apartments.
- The new transit plaza in front of the apartments runs a direct AC transit line to campus.
- Apartments include in-unit washers and dryers.

Intersection Apartments

Opened 2022 in vibrant, nearby Emeryville.

- Rooms are furnished, light-filled, airy and modern, with oversized windows.
- Served by several bus lines to campus, Emeryville is a dynamic and diverse city, home to a wide range of restaurants, cafes, shopping centers, movie theaters, and local businesses.
- Graduate students receive priority enrollment.

Family Student Housing

UC Berkeley's Family Student Housing complex University Village offers unfurnished apartments for married/partnered students, with or without children, and single parents. With 974 apartments and townhouses, University Village has its own recreational and community center, a café, laundry rooms, and child care center. The 58-acre complex is located 3.5 miles northwest of campus in the nearby town of Albany, known for its excellent school district. The complex is served by AC Transit; registered students can ride for free.

For more information, email apts@berkeley.edu, or call (510) 642-4109.

“I think that’s part of why I really wanted to enter academia—to pay that forward and to introduce students to a language I love without all of the usual associations of elitism. I wanted them to have something of the experience I had in high school. So that’s how I came into studying Classics, and those are my goals within academia. It seems like a very lofty goal, and maybe a little naive of me, but I want it to change; I want it to be less exclusionary. The best way to start is to do that in my own classroom.”

Lauren Nguyen, Graduate Student and GSI, Department of Ancient Greek and Roman Studies

Read more about Lauren’s Ph.D. studies, the exploration of identity, and classics by scanning the QR code.





Explore Campus Spaces

Berkeley Art Museum and Pacific Film Archive (BAMPFA) One of the nation's leading university art centers, BAMPFA is a forum for cultural experiences that transform individuals and advance the global discourse on art and film. Free admission for students.

The **Bancroft Library** The special collections library at UC Berkeley is one of the largest and most heavily used libraries of manuscripts in the United States.

The **Berkeley Center for New Media** is a focal point for research and teaching about new media, led by a transdisciplinary community of over 100 affiliated faculty, advisors, and scholars from 35 UC departments and schools including Architecture, Philosophy, Film & Media, History of Art, Performance Studies, Music, Engineering, Information, Journalism, and Law.

Cafe Ohlone is a one-of-a-kind culinary and educational experience and community space located outside the Hearst Museum of Anthropology promoting language restoration, traditional arts, Ohlone culinary traditions, and climate justice through land rehabilitation. Closed during the rainy season.

The **Doe Memorial Library** supports the teaching, research, and instructional needs of more than fifty academic departments and programs. The Art History/Classics Library and the South/ Southeast Asia Library are also found there.

The **Jacobs Institute for Design Innovation** is a hub for learning and making at the intersection of design and technology, where engineers, artists, and makers of all kinds can gather and collaborate. The Institute provides a range of opportunities for hands-on, team-based learning from a professional masters degree program to independent tinkering, courses, and co-curricular offerings.

The **Lawrence Hall of Science** is at the forefront of science education, fostering scientific exploration with a focus on equitable and effective learning experiences.

Moffitt Library is one of the busiest student campus libraries. Home to the **Free Speech Movement Café** and the News[paper Display Wall, Moffitt is reserved for UC Berkeley students and faculty, food- and drink-friendly, and open the longest hours or any library on campus.

The **Phoebe A. Hearst Museum of Anthropology** is dedicated to the study of cultures, with an estimated 3.8 million objects from around the world. Free admission for students.

The **UC Botanical Garden** is one of the most diverse landscapes in the world, with over 10,000 types of plants, including rare and endangered species, organized geographically in 9 naturalistic plantings. Free admission for students.

The **Hearst Greek Theatre** at UC Berkeley is an 8,500 seat amphitheater that hosts music concerts, UC Berkeley graduation ceremonies and occasional addresses by noted speakers.

Cal Performances' mission is to produce and present performances of the highest artistic quality, enhanced by programs that explore compelling intersections of education and performing arts. Special student tickets and packages available.

“I started grad school at Berkeley wanting to explore the connection between technology and language. So many people I knew from my undergrad who studied languages eventually went on to work in tech, doing things like programming Alexa or training Google Translate.” Kayla said, “At Berkeley, I see all these cool events happening on campus, but they’re all just STEM people talking about STEM things. If there is an inclusion of humanities, so far, it’s only been in conversations about AI and ethics, but not around language, which is proving in all fields to be at the heart of AI. I want to see more discussions about the role of language in large language models, and connect with folks across Berkeley so we can collaborate and utilize each other’s strengths.”

Kayla van Kooten, Graduate Student in the Department of German, Speaking about a campus-wide conference she launched through a Townsend Center Working Group

Read an interview with Kayla about her research and campus-wide efforts to collaborate by scanning the QR code.



Campus Map

- 1** Alfred Hertz Memorial Concert Hall: Department of Music
- 2** Art Practice Building: Department of Art Practice and studios
- 3** Bauer Wurster Hall: Ceramics Studio (Art Practice) Platform Artspace (Art Practice)
- 4** Bancroft Dance Studio: Theater, Dance, and Performance Studies
- 5** The Campanile Department of Music
- 6** Doe Library: History of Art Department and the Visualization Lab for Digital Art History
- 7** Dwinelle Hall:
 - Department of Ancient Greek & Roman Studies
 - Ancient History and Mediterranean Archaeology Group
 - Berkeley Language Center
- 8** Hearst Field Annex: Arts Research Center
- 9** Morrison Hall: Department of Music
- 10** Philosophy Hall: Department of Philosophy
- 11** Magnes Collection of Jewish Art and Life (Allston Way)
- 12** Social Sciences Building: Department of Middle Eastern Languages & Cultures
- 13** Stephens Hall:
 - Art of Writing Program
 - Berkeley Center for the Study of Religion,
 - Center for Interdisciplinary Critical Inquiry (CIC)
 - Townsend Center for the Humanities
- 14** Wheeler Hall: English Department Medieval Studies Program Berkeley Writing Center
- 15** Zellerbach Playhouse Theater, Dance, and Performance Studies
- 16** Center for New Music and Audio Technologies (1750 Arch Street)

SECOND TO LAST
TEXT PAGE

INNER FOLDOUT
TEXT PAGE



16 Off Site

**OUTER FOLDOUT
TEXT PAGE**

LAST TEXT PAGE

